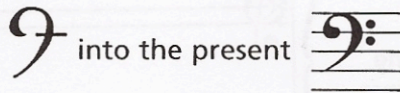


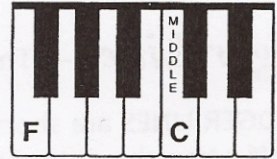
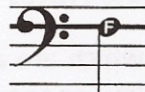
Bass Clef and Staff

The BASS CLEF (pronounced "base") is used for notes in the lower pitch ranges. The bass (or F) clef has evolved from a stylized letter F:



The two dots of the bass clef surround the line on which the note F is placed. This F is below middle C.

The BASS STAFF



In the bass staff, the names of the notes on the lines from bottom to top are G, B, D, F, A.

Line Notes

Good Boys Do Fine Always

The names of the notes in the spaces from bottom to top are A, C, E, G.

Space Notes

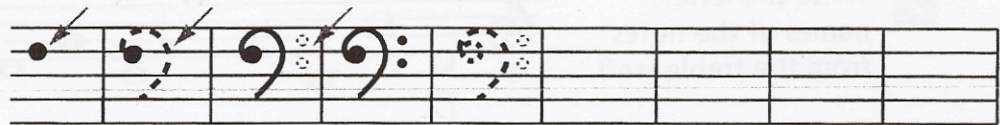
All Cows Eat Grass

All the notes of the BASS STAFF:

Exercises

- The bass clef is written in four motions. Trace along the dotted lines as indicated, then draw four more.

Motion 1: Dot on 4th line Motion 2: Curved line Motions 3 & 4: Dots surrounding 4th line



- Write the letter names of the following notes.

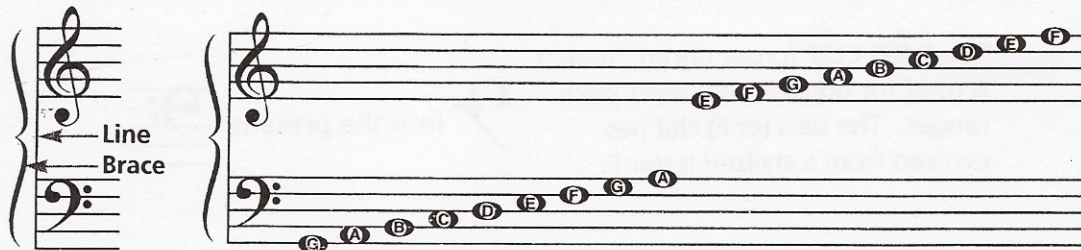
B

- Write the notes on the staff indicated by the letters. If the notes can be written in two places, write one above the other.

G B C F E A D G

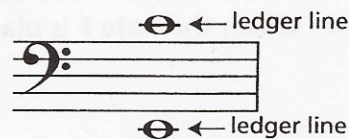
The Grand Staff

When the bass and treble staves are connected by a brace and a line, they combine to form the GRAND STAFF.

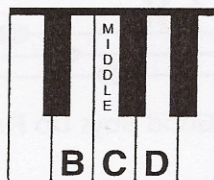
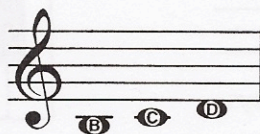
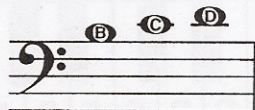


Ledger Lines — The Middle Notes

LEDGER LINES are short lines which are added to extend the range of the staff when the notes are too low or too high to be written on the staff.



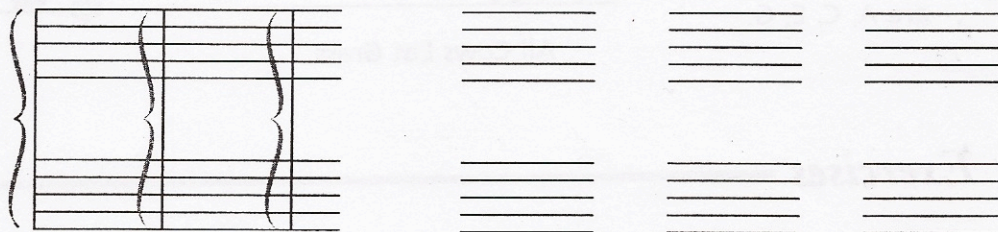
The notes in the middle range of the grand staff are B, C and D. They can be written on ledger lines in both the bass and treble staves.



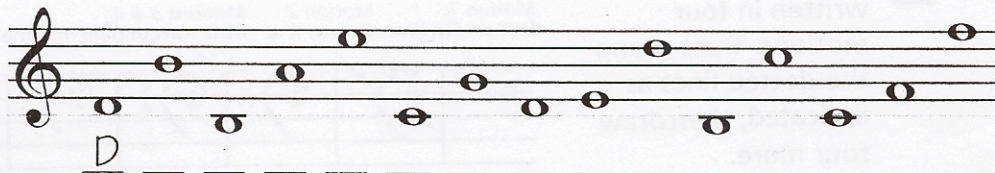
These notes are written differently but sound the same.

Exercises

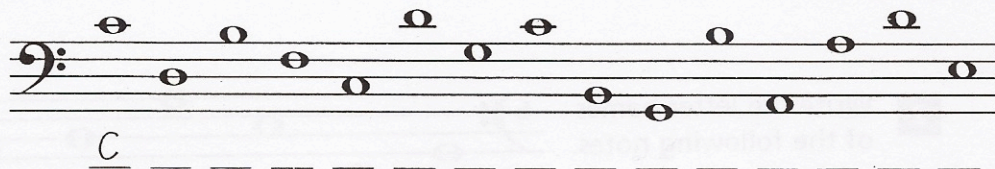
- Trace these three braces. Then, using the staves provided, draw the grand staff three times. Include the brace, line and both clef signs.



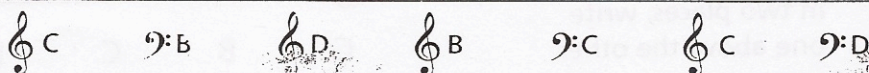
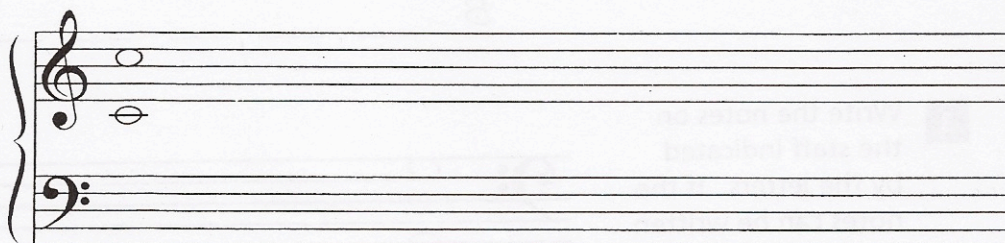
- Write the letter names of the notes from the treble staff.



- Write the letter names of the notes from the bass staff.



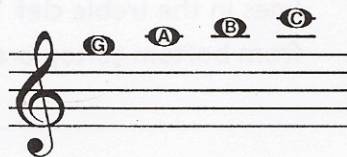
- Write the notes indicated by the clefs and letter names in two places on the grand staff. Add ledger lines where necessary.



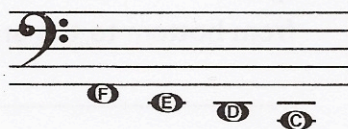
Ledger Lines

Low and High Notes

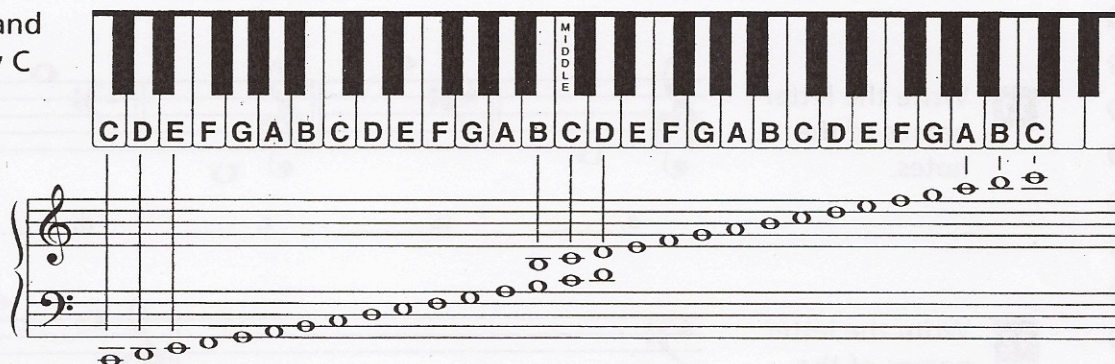
More than one ledger line may be added to extend the lower and upper ranges of the grand staff. The next higher notes of the treble staff are G, A, B and C.



The next lower notes of the bass staff are F, E, D and C.



All the notes on the grand staff from bass clef Low C to treble clef High C:

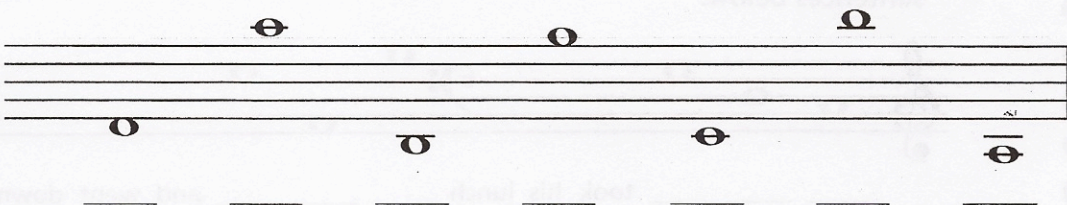


Exercises

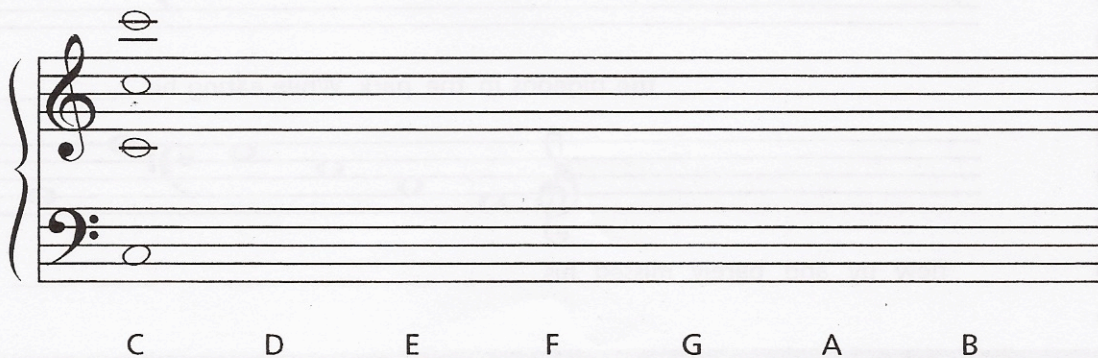
- 1** Draw a treble clef and name the notes.



- 2** Draw a bass clef and name the notes.



- 3** Write each of the indicated notes in four places on the grand staff.



1 How many lines are on a single staff? _____

2 How many spaces are on a single staff? _____

3 Is the 5th line at the bottom or top of the staff?

4 Which clef is also known as the G clef? _____

5 The note names of the five lines in the treble clef from bottom to top are:

6 The note names of the four spaces in the treble clef from bottom to top are:

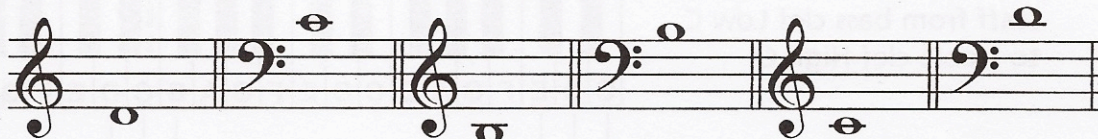
7 The line through middle C is called a _____ line.

8 Which clef is also known as the F clef? _____

9 The note names of the five lines in the bass clef from bottom to top are:

10 The note names of the four spaces in the bass clef from bottom to top are:

11 Write the letter names of the notes.



a. _____ b. _____ c. _____ d. _____ e. _____ f. _____

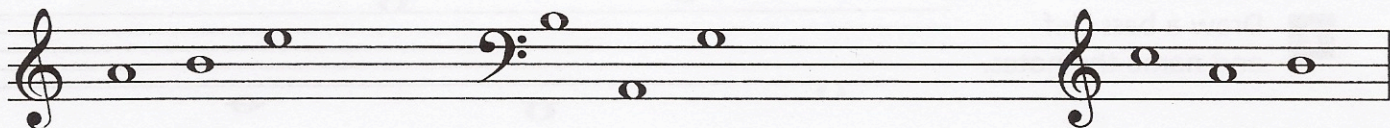
12 Write the letter names of the notes.



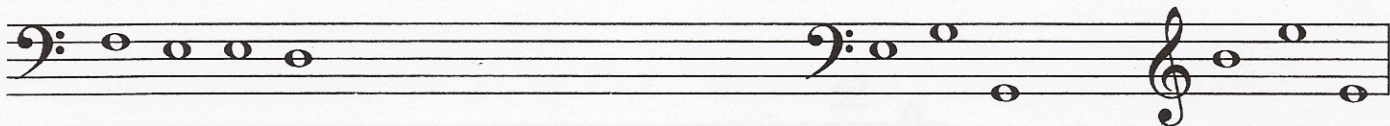
13 Draw the grand staff and name the notes.



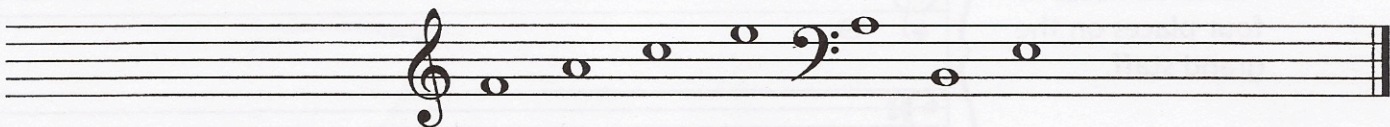
14 Spell the words to complete the sentences below.



_____ took his lunch _____ and went downtown in a _____ to



_____ the pigeons in the park. While eating his _____ sandwich, a _____



flew by and barely missed his _____ decided to go home.