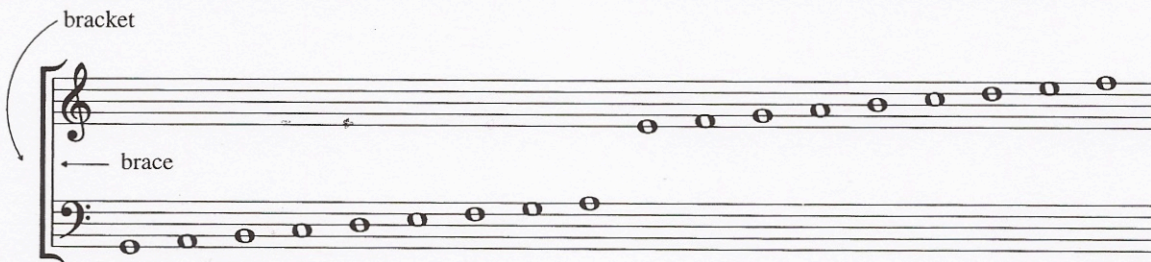


Observe: Name objects or instruments that produce high sounds

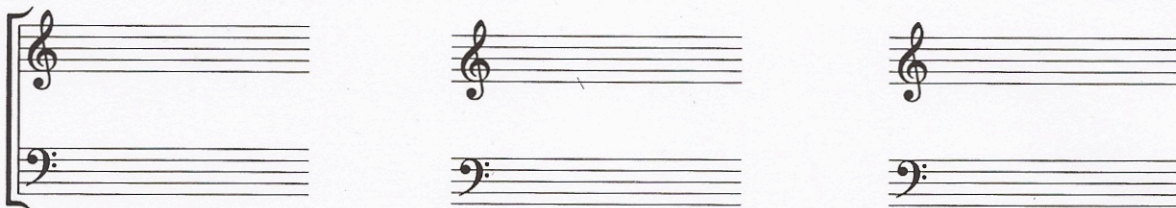
low sounds

GRAND STAFF

A grand staff is a grouping of two staves (plural of staff) connected by a brace and a bracket.



Practice: Trace the brace and bracket pattern on the left; then fill in the brace and bracket on the next 2 examples.

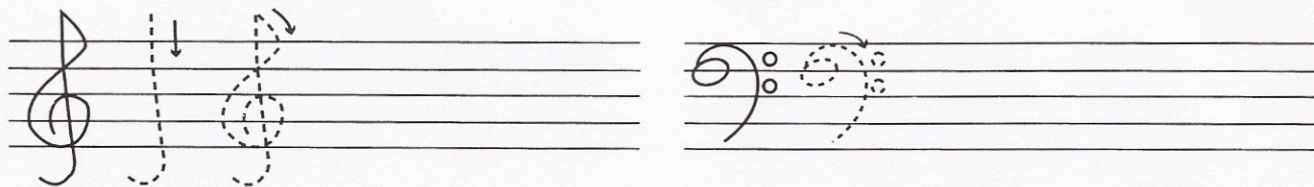


CLEF

The symbols at the beginning of each staff are called *clefs*. A clef identifies a set of pitches. The *treble clef* generally refers to higher pitches while the *bass clef* refers to lower pitches. When they are placed on a grand staff, the treble clef is on the upper staff and the bass clef is on the lower staff.



Practice: Write both clefs below. Begin by tracing the clefs; notice carefully the detail. Then draw 3 more of each clef.



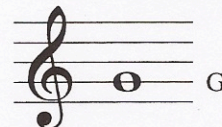


TREBLE CLEF

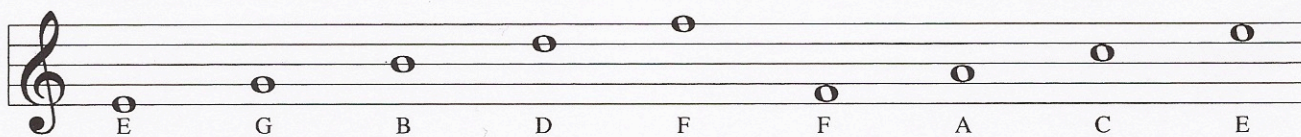
Name _____

TREBLE CLEF

The *treble clef* is used for notes of higher pitch. It is also called the “G” clef because the curl of the treble clef circles the “G” line on the treble staff.



The lines and spaces of the staff are given certain letter names when the treble clef is used.



An easy way to learn the letter names of the spaces in treble clef is to remember that they spell the word FACE from the bottom up.

Write: Make up your own phrase for the letters EGBDF (the treble clef lines).

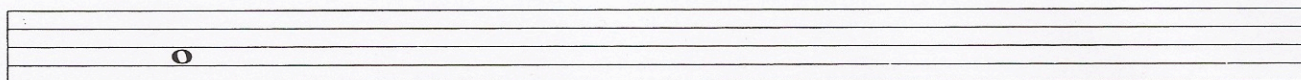
Practice: Write a treble clef sign and write the letter name of the note as indicated below.



Treble Clef

G _____

Practice: Write a treble clef sign; then write a whole note for each letter name listed below.

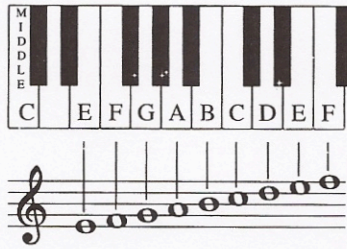


Treble Clef

A E B F G C D E

Write: Using the letters of the treble clef, make up as many words of any length that use only those letters: _____

Look/Listen: The piano keyboard can help you understand treble clef and pitch. The pitches on the staff match a set of white keys on the piano.



Each note written on the treble staff matches the sound of a piano key. Notice the groups of black keys, two then three, in between the white notes. This pattern repeats many times. Remembering this pattern will help you find a note on the piano.

Match: Put the letter on the correct key(s) of the piano keyboard shown below. “F” has been done for you.



F A C E

_____ : In the treble clef, what do the letters listed above represent?

Musical Spelling Test in the Treble Clef: Figure out the words created by the notes below.

1. _____

3. _____

2. _____

4. _____



READING TREBLE CLEF

Name _____

The **treble clef** is used for notes of higher pitch. The treble clef is also called the G clef because the curl of the treble clef circles the G line on the treble staff.

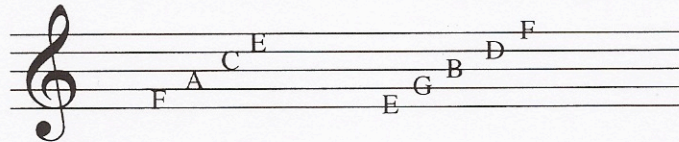


In the **musical alphabet** there are 7 letter names for pitches: A B C D E F G. These letter names repeat as the pitches move higher and lower.

Write the letters of the musical alphabet starting with A _____

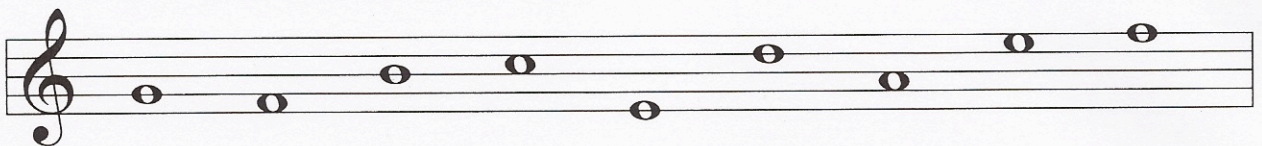
Write the letters of the musical alphabet backwards. _____

One way to identify pitches on the treble staff is to think of the line and space notes separately. The pitches in the spaces of the treble staff spell the word **FACE**. To remember the names of the lines of the treble staff, just think of the phrase **Every Good Boy Does Fine**.

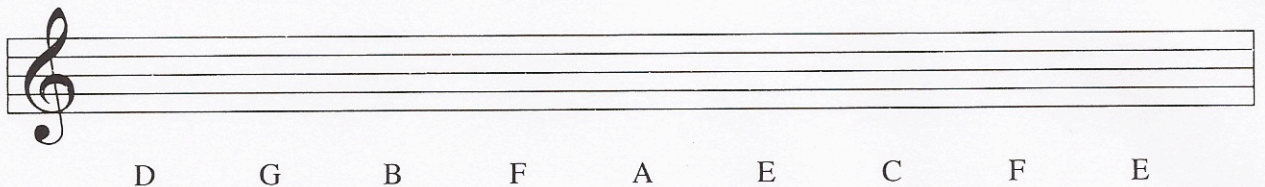


TEST YOURSELF!

Name the following pitches on the treble staff.

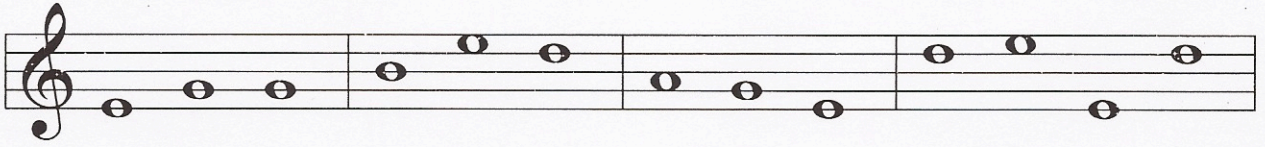


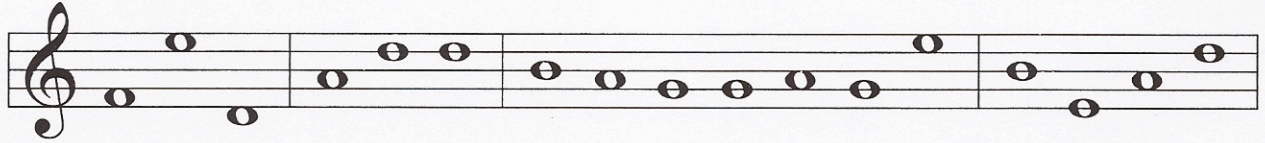
Notate the pitches given under the treble staff below.



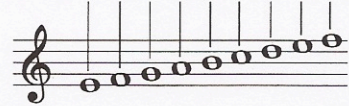
MUSICAL WORDS

The following measures below contain pitches that will spell a word. Name the notes to discover the word.



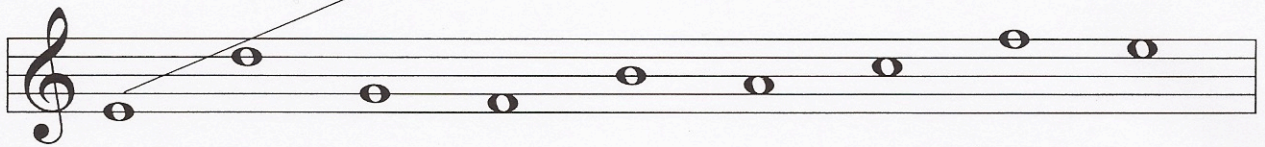


The treble clef notes correspond with the keys in the upper half of the piano. The higher the note on the staff, the higher that note will be on the keyboard.



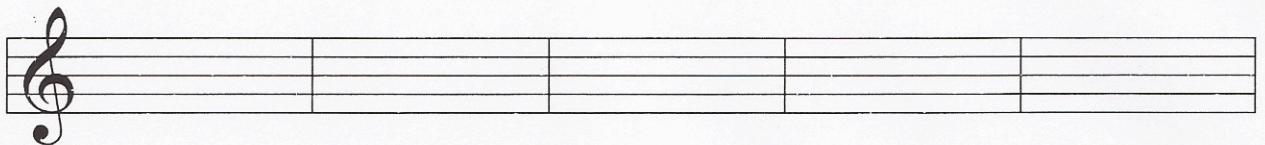
KEYBOARD MATCH

Draw a line connecting each note on the staff to the keyboard. The first one has been done for you.

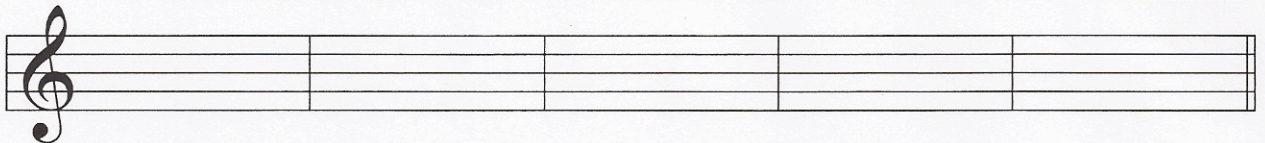


PROJECT: TELL A STORY

Create 10 words using the musical alphabet and draw the notes for those words on the treble clef.



1. _____ 2. _____ 3. _____ 4. _____ 5. _____



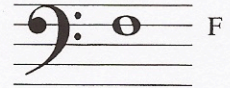
6. _____ 7. _____ 8. _____ 9. _____ 10. _____



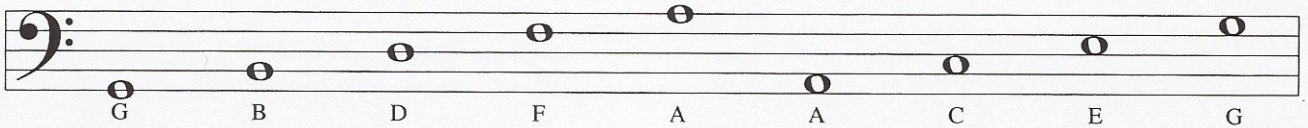
BASS CLEF

Name _____

The *bass* (pronounced "base") clef is used for notes of lower pitch. It is also called the "F" clef because the two dots of the clef surround the line named "F" in bass staff.



The lines and spaces of the staff have different letter names than those written in the treble clef.



An easy way to learn the letter names of the spaces in bass clef is to remember the acronym ACEG or the phrase All Cows Eat Grass.

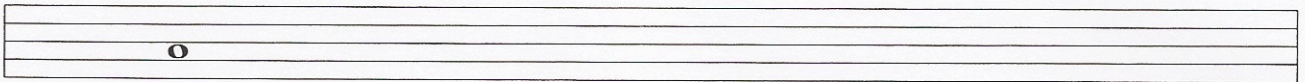
Write: Make up your own phrase for the letters GBDF (the bass clef lines).

Practice: Write the bass clef sign and write the letter name of the note as indicated below.



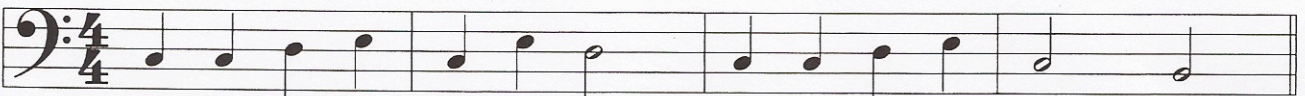
Bass Clef B

Practice: Write the bass clef sign; then write a whole note for each letter name listed below.



Bass Clef

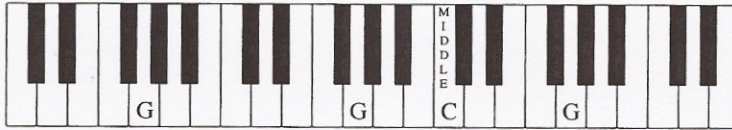
Bonus: Can you guess the tune? Write the name of the notes below the staff.



Look/Listen: The piano keyboard can help again in learning the names of lines and spaces in the bass clef. The same letters (F,G,A,B,C,D,E) used in treble clef are used in bass clef. The bass clef just organizes these letters in a different way.



Match: Put the letter on the correct key(s) of the piano keyboard shown below. "G" has been done for you.



G B D F A

In the bass clef, what do the letters listed above represent?

Musical Spelling Test in the Bass Clef: Figure out the words created by the notes below.

1. _____

3. _____

2. _____

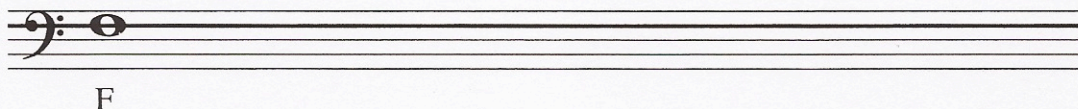
4. _____



READING BASS CLEF

Name _____

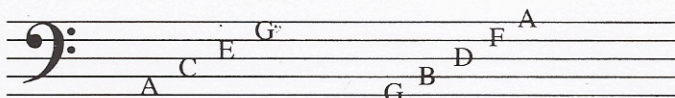
The **bass clef** (bass is pronounced “base”) is used for notes of lower pitch. It is also called the F clef, because the two dots of the clef surround the F line of the bass staff.



The pitch names for the spaces in this clef are **ACEG**. The line notes in bass clef are **GBDFA**. Here is one way to remember the line and space notes on the bass clef.

spaces: All Cows Eat Grass

lines: Good Birds Don't Fly Alone



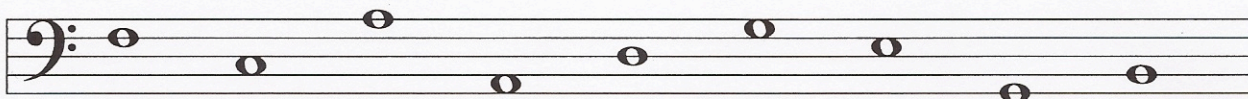
Write at least one other way to remember the line and space notes.

spaces: A _____ C _____ E _____ G _____

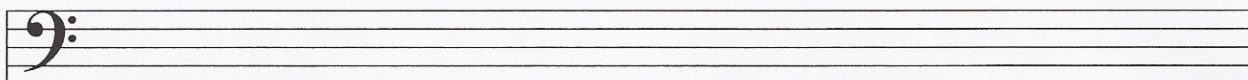
lines: G _____ B _____ D _____ F _____ A _____

KNOW THE BASS NOTES

Identify the following bass clef notes.

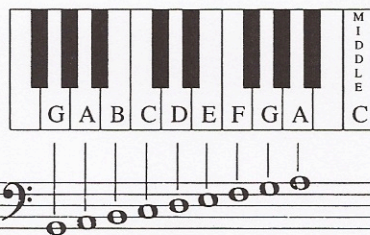


Notate the pitches given under the bass staff below.



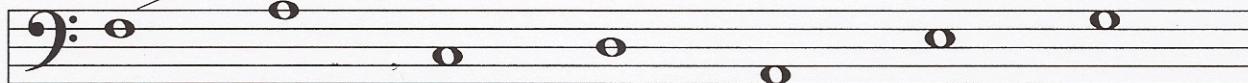
F C D A G E B G A

The pitches written on the bass staff fall below middle C on the piano keyboard.



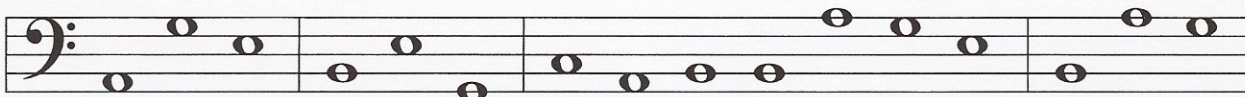
KEYBOARD MATCH

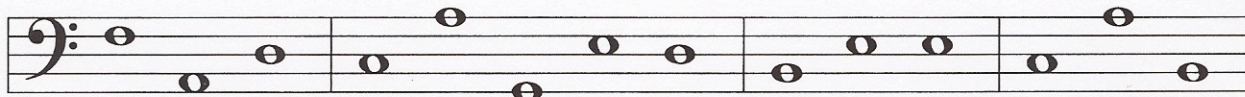
Draw a line connecting each note on the staff to the piano keyboard. Remember, all notes in the bass clef are below middle C!



SPELLING THE BASS CLEF

Each measure below contains notes that will spell a word. Identify the pitches to discover the word.





Dinner for Two Spell words by writing the note names to complete the sentences below.



One day, _____ met her old friend _____ at a _____



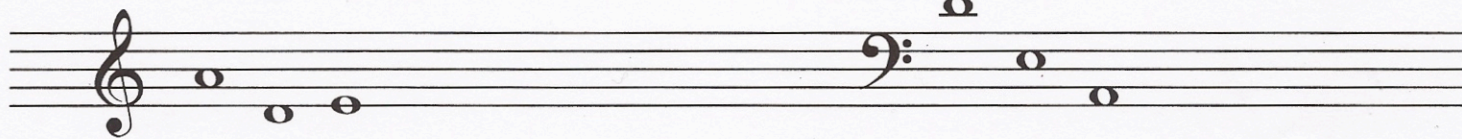
for dinner. _____ hostess led them through the _____ curtain to



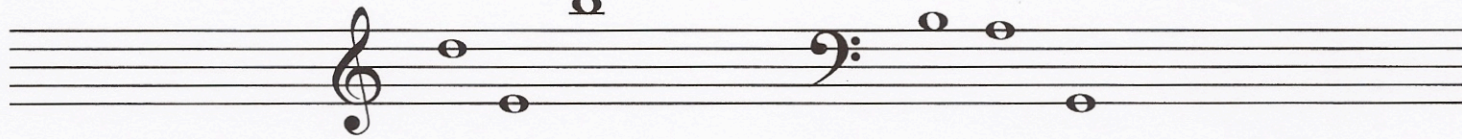
their table. _____ ordered the corn _____ and



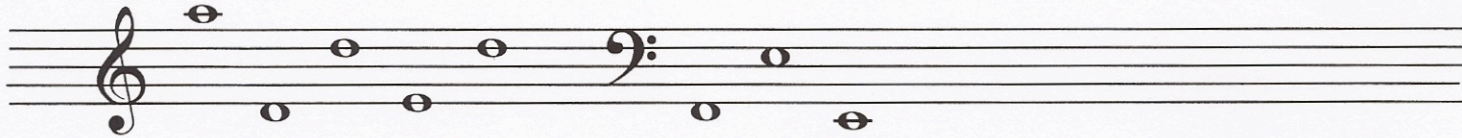
_____ while _____ ordered an _____ salad sandwich



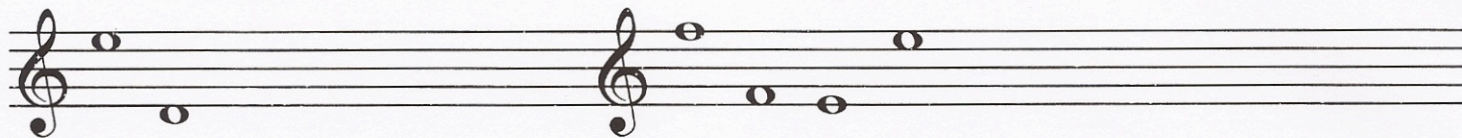
and lemon _____. They ate and chatted about musical i _____ s and their



favorite composers. Finally, _____ called for a doggy _____.



The waiter _____ up their _____ and brought it to the table.



_____ said, "I've decided to order co _____."



"I'll have some, too," said _____, "but make mine _____."

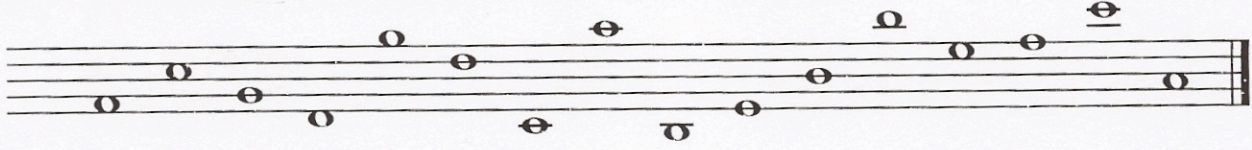
5*100

*5 points for each group

1-2

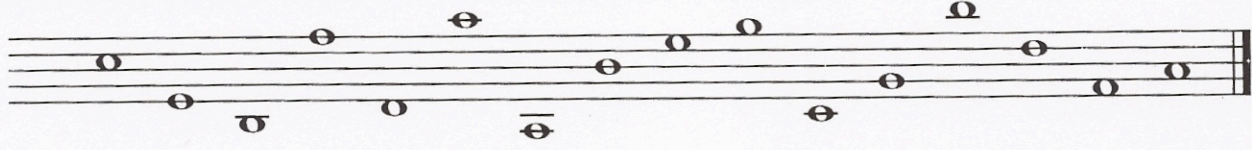
1 The G clef is also known as the _____ clef. The F clef is also known as the _____ clef.

2 Draw the treble clef and write the letter names of the notes.



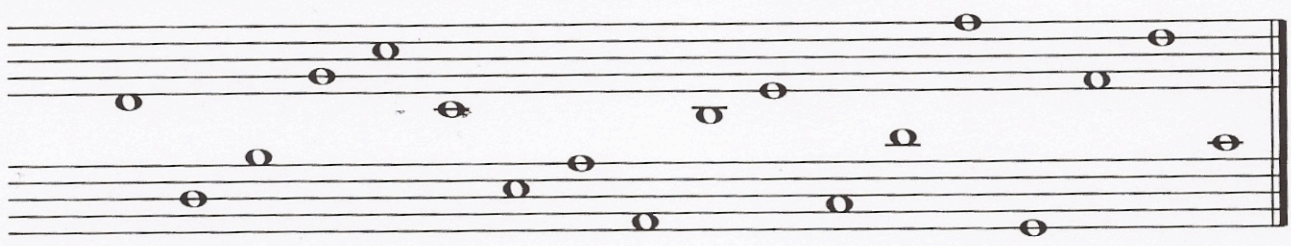
1-16

3 Draw the bass clef and write the letter names of the notes.



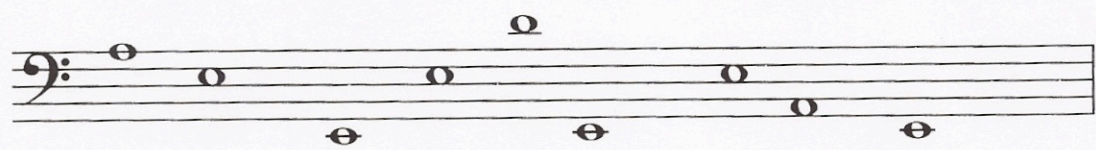
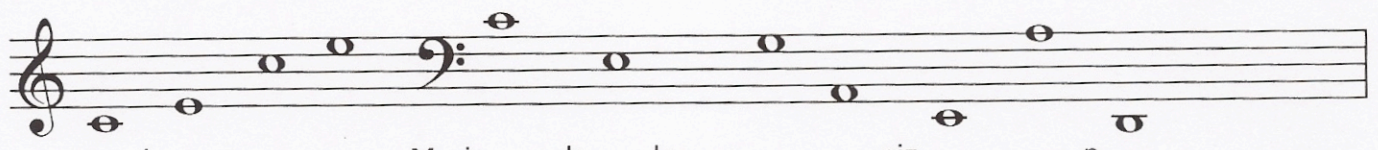
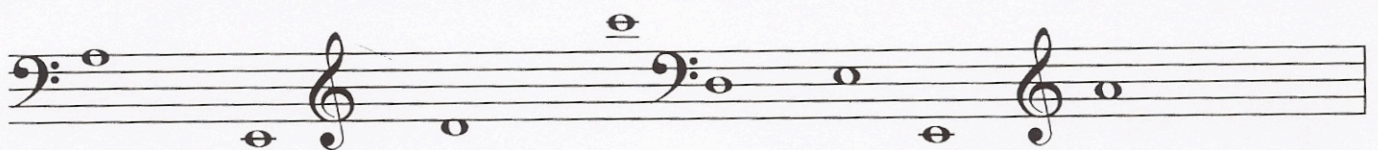
1-16

4 Complete the grand staff and write the letter names of the notes.



1-18

5 Fill in the missing letters to spell words and complete the sentences below.



1-48

100