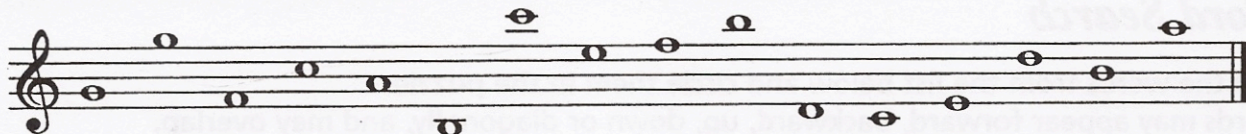


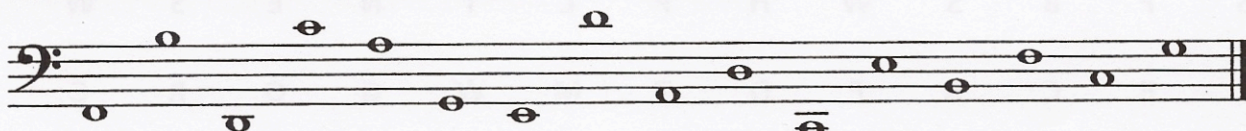
Note Naming

1 Write the letter names of these notes from the treble staff.



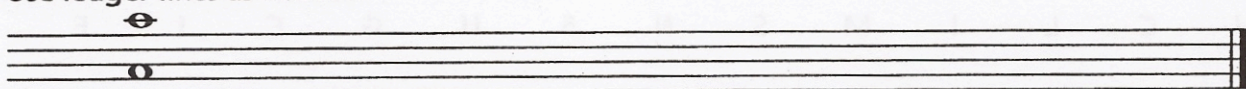
1-16

2 Write the letter names of these notes from the bass staff.



1-16

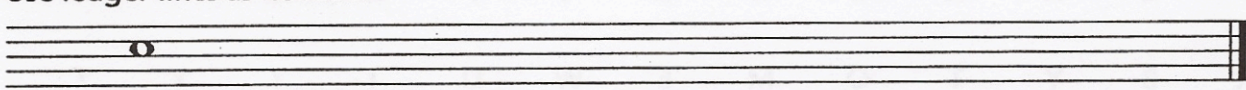
3 Draw a treble clef. Draw the indicated notes in two places on the staff. Use ledger lines as needed.



2-12

A F B G C E D

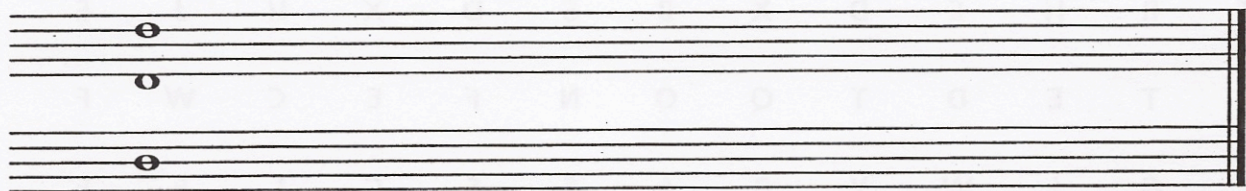
4 Draw a bass clef. Draw the indicated notes in two different places on the staff. Use ledger lines as needed.



2-12

E B G D A C F

5 Complete the grand staff by drawing the treble and bass clefs, and the connecting brace and line. Draw the indicated notes in four different places on the grand staff.



4-24

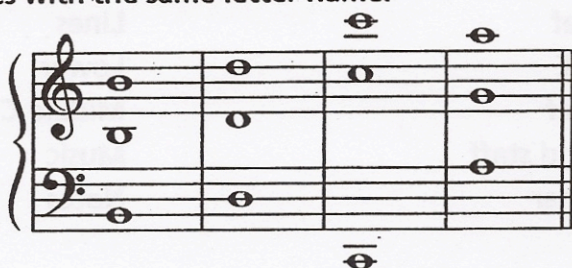
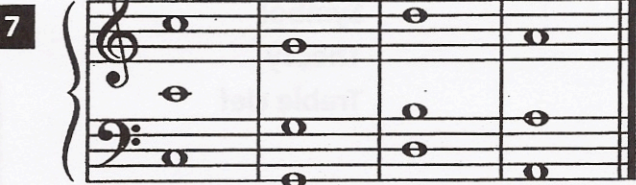
D G B E C F A

6 For each line, circle the measure that has a note named differently from the others.



4-12

Circle each measure that does not have three notes with the same letter name.



4-8

100