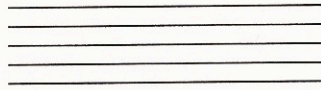


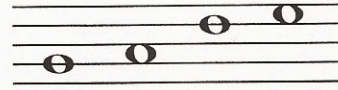
# The Staff, Notes and Pitches

Music is written on a STAFF of five lines and the four spaces between.

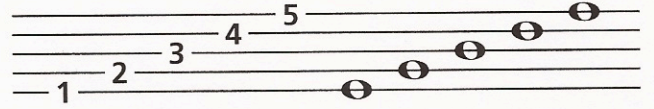


The STAFF

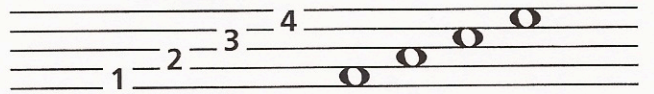
Music NOTES are oval-shaped symbols that are placed *on* the lines and *in* the spaces. They represent musical sounds, called PITCHES.



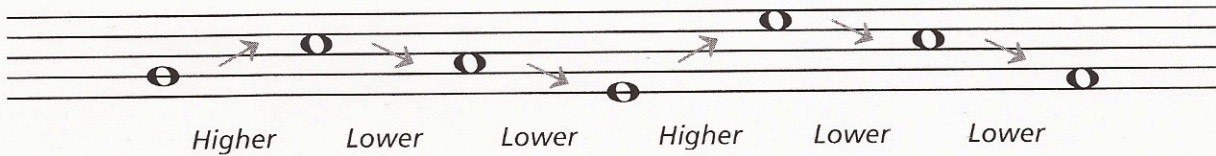
The lines of the staff are numbered from bottom to top.



The spaces between the lines are also numbered from bottom to top.



If the notes appear *higher* on the staff, they sound *higher* in pitch.  
If the notes appear *lower* on the staff, they sound *lower* in pitch.

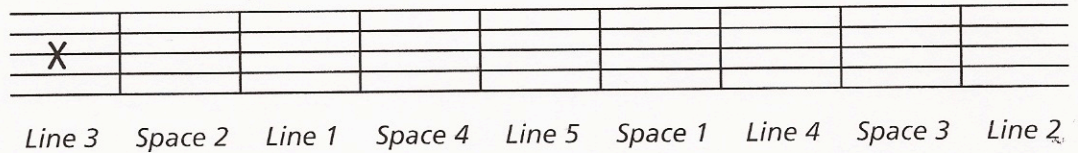


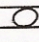
## Exercises

- 1** Draw a staff by connecting the dots. Use a ruler or straight edge. Number the lines, then the spaces from low to high.



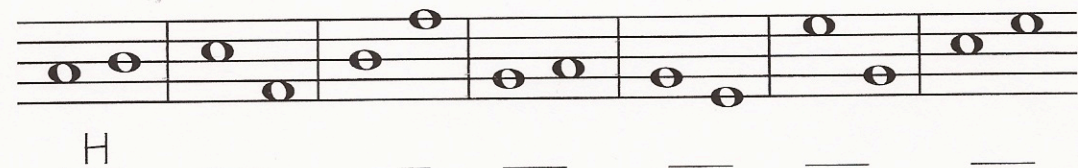
- 2** On the staff, mark an X in the following locations:



- 3** Write notes like this  on the following lines and spaces:



- 4** Indicate whether the 2nd note is higher or lower than the 1st note by using an H (higher) or L (lower).

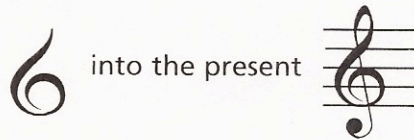


## Treble Clef and Staff

Music notes are named after the first seven letters of the alphabet, from A to G. By their position on the staff, they can represent the entire range of musical sound.

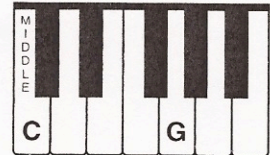
CLEF signs help to organize the staff so notes can easily be read.

The TREBLE CLEF is used for notes in the higher pitch ranges. The treble (or G) clef has evolved from a stylized letter G:

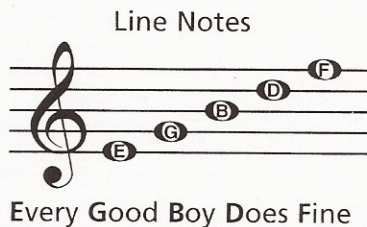


The curl of the treble clef circles the line on which the note G is placed. This G is above MIDDLE C (the C nearest the middle of the keyboard).

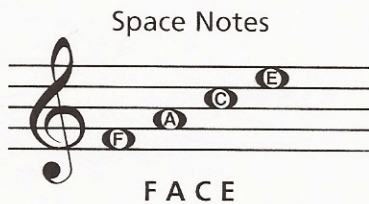
The TREBLE STAFF



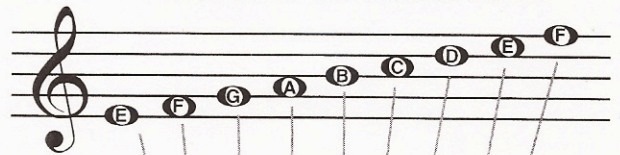
In the treble staff, the names of the notes on the lines from bottom to top are E, G, B, D, F.



The names of the notes in the spaces from bottom to top spell FACE.

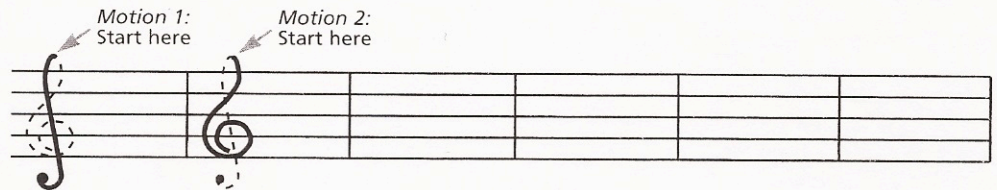


All the notes of the TREBLE STAFF:

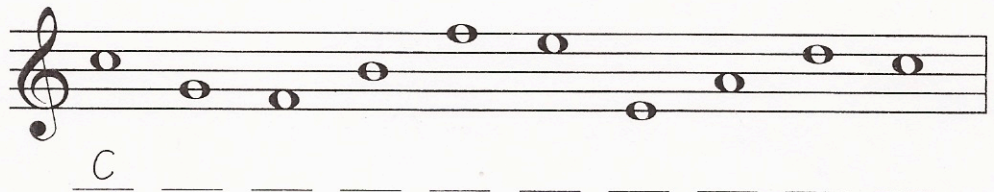


## Exercises

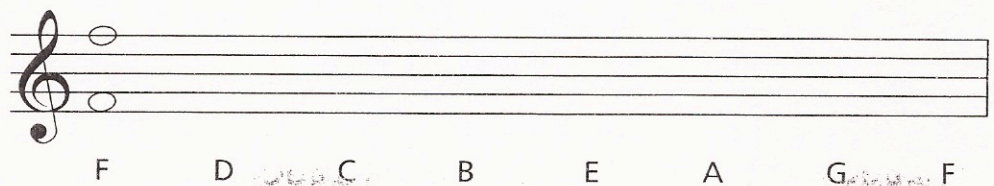
- 1** The treble clef is written in two motions. Trace along the dotted lines as indicated, then draw four more.



- 2** Write the letter names of the following notes. Use capital letters.



- 3** Write the notes on the staff indicated by the letters. If the notes can be written in two places, write one above the other.



Name \_\_\_\_\_

Score \_\_\_\_\_

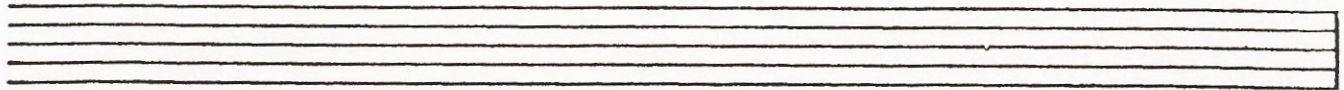
Date \_\_\_\_\_

Class \_\_\_\_\_

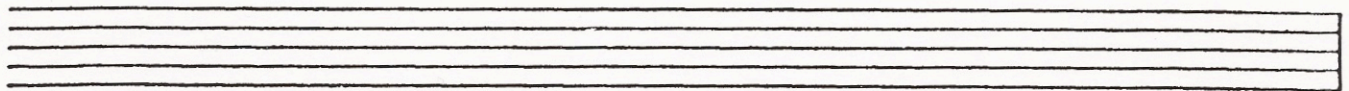
**15. DRAWING NOTES**

**(II-15)**

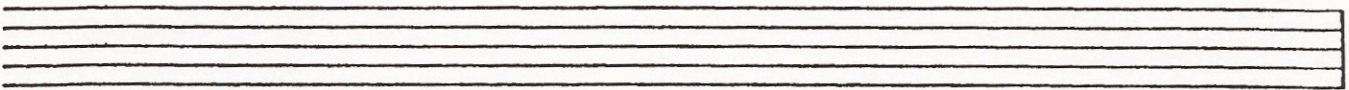
Draw the Treble Clef sign on the staffs and then draw the proper notes above the letter names.



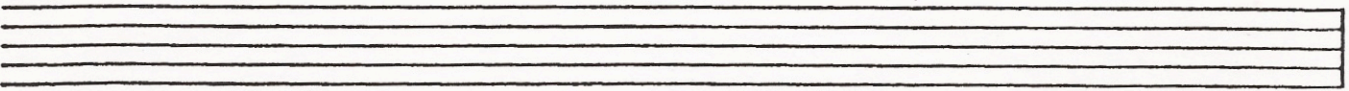
1.        G            D            B            F            A            E            C            G



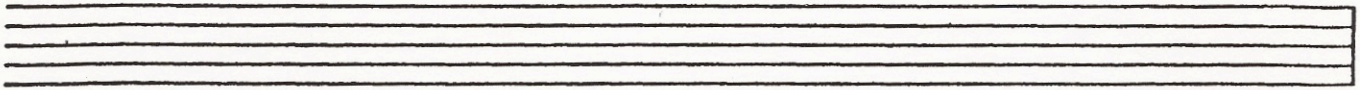
2.        A            E            G            B            D            F            A            C



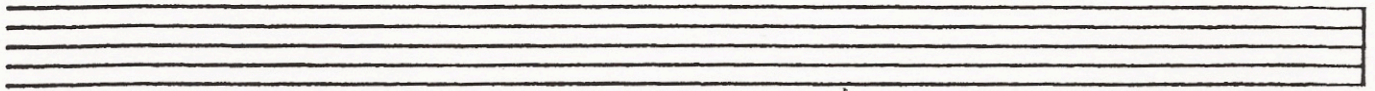
3.        C            D            F            B            G            B            E            A



4.        E            G            C            D            A            B            C            F



5.        F            C            B            E            A            F            D            G



6.        G            B            D            F            C            E            A            D

Name \_\_\_\_\_

Score \_\_\_\_\_

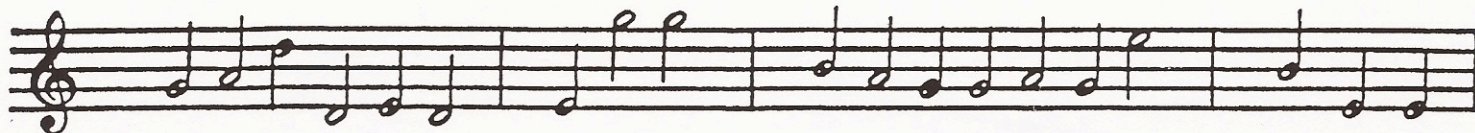
Date \_\_\_\_\_

Class \_\_\_\_\_

### 14. SPELL THE WORDS

(II-14)

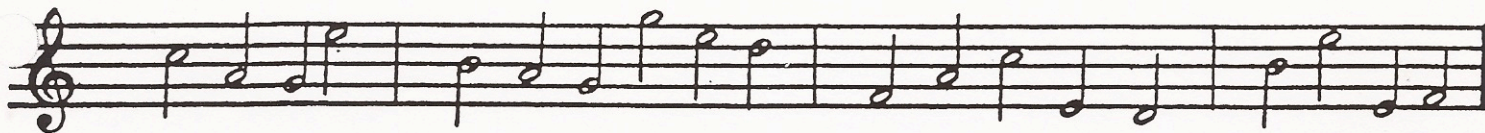
Each group of notes spells a word. Write the letter names of the notes on the blank under each group.



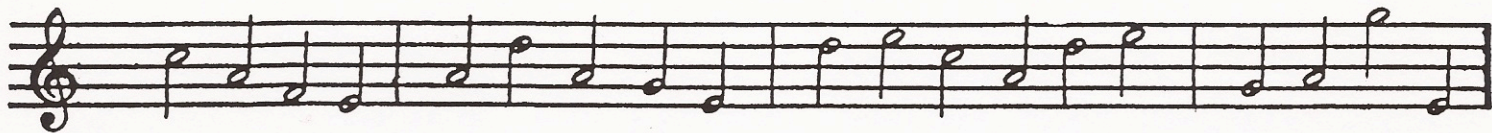
1. \_\_\_\_\_ 2. \_\_\_\_\_ 3. \_\_\_\_\_ 4. \_\_\_\_\_



5. \_\_\_\_\_ 6. \_\_\_\_\_ 7. \_\_\_\_\_ 8. \_\_\_\_\_



9. \_\_\_\_\_ 10. \_\_\_\_\_ 11. \_\_\_\_\_ 12. \_\_\_\_\_



13. \_\_\_\_\_ 14. \_\_\_\_\_ 15. \_\_\_\_\_ 16. \_\_\_\_\_



17. \_\_\_\_\_ 18. \_\_\_\_\_ 19. \_\_\_\_\_ 20. \_\_\_\_\_ 21. \_\_\_\_\_

Name \_\_\_\_\_

Score \_\_\_\_\_

Date \_\_\_\_\_

Class \_\_\_\_\_

### 1. THE NOTE SPELLDOWN

(II-1)

Write the letter names for the following notes.\*

1.

2.

3.

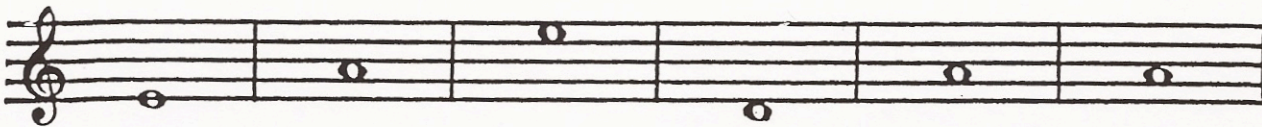
4.

5.

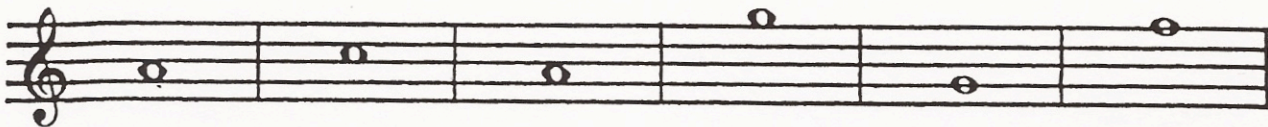
6.



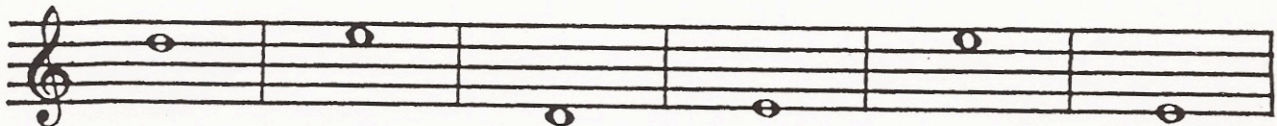
\_\_\_\_\_



\_\_\_\_\_



\_\_\_\_\_



\_\_\_\_\_

\* Check your answers by reading the note names from the top to the bottom. Each group of letters spells a word.

Write the words here:

1. \_\_\_\_\_

2. \_\_\_\_\_

3. \_\_\_\_\_

4. \_\_\_\_\_

5. \_\_\_\_\_

6. \_\_\_\_\_

Name \_\_\_\_\_

Score \_\_\_\_\_

Date \_\_\_\_\_

Class \_\_\_\_\_

### 12. CROSSWORD PUZZLE

Each set of notes spells a word. Write the words in the puzzle by their matching numbers.

#### ACROSS

1.

4.

7.

8.

9.

10.

12.

#### DOWN

1.

2.

3.

5.

6.

7.

11.